



ModularLine

Article No. S63000

# BURSTING STRENGTH

For:



✓ PAPER



✓ BOARD



✓ TISSUE



## MOST IMPORTANT BENEFITS

- ✓ Measuring range: 20 – 2,000 kPa
- ✓ Burst tester for paper; also available for board (measuring range for board: 20 – 10,000 kPa)
- ✓ Touchscreen for convenient control
- ✓ Safety protection
- ✓ Also available for inverted tests
- ✓ Display of burst curve, optionally available with BEA (Burst Energy Absorption) value

 **FRANK-PTI**  
QUALITY TESTING INSTRUMENTS

SUBSIDIARY OF  Eid-Hausmann

### Germany

FRANK-PTI GMBH  
Auf der Aue 1  
69488 Birkenau  
Tel.: +49 6201 84-0  
office@frank-pti.com

### Austria

PAPER TESTING INSTRUMENTS GMBH  
Hauptstrasse 41a (at BDZ)  
4663 Laakirchen  
Tel.: +43 7613 90607-0  
office@at.frank-pti.com

[www.frank-pti.com](http://www.frank-pti.com)

## PRODUCT DESCRIPTION

The procedure for determining burst pressure is different for paper and board. Therefore the ModularLine burst pressure device is also available in two variants. These are different, essentially, in the clamping bell and membrane designed for the procedure being used. The exact construction of the individual components as well as the high-precision measurement and regulation technology give the testing device a unique accuracy. As with all ModularLine testing devices, the burst test device can be used as either an independent laboratory device, and/or as part of a ModularLine. In the standard configuration, the burst pressure is measured from the underside of the sample. According to requirements, a configuration is also available where the measurement is carried out at the upper surface.

## TEST DESCRIPTION

The sample for testing is placed in the measurement area. After pressing the start button the clamping bell travels down and fixes the sample. The glycerine, which is located below the membrane, is compressed and in this way the membrane is held continuously against the sample. This bulges, loses cohesion, and eventually bursts. Then the clamping bell travels back to the start position. The burst pressure measured and the energy absorption characteristics are displayed on the touch screen numerically and graphically. If more than one test is carried out, these can be compared statistically and standard deviation can be displayed.

## TECHNICAL DATA

### DEVICE/INSTRUMENT

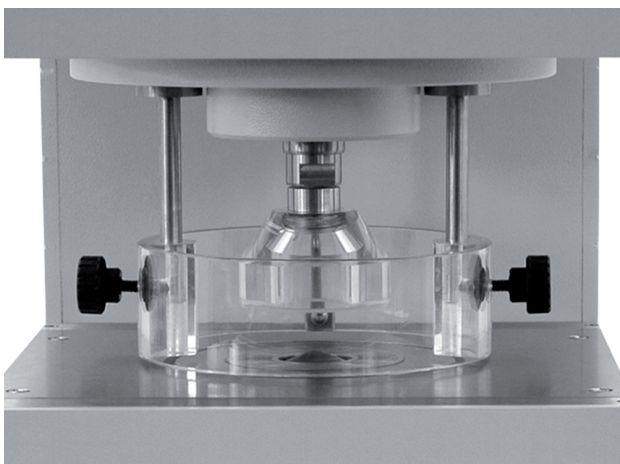
- Easy operation via the integrated touch screen
- Pneumatic sample clamping
- Safety protection around the measuring area
- Measuring area:  
 Paper: 860 mm<sup>2</sup>  
 Board: 780 mm<sup>2</sup>
- Motor operated hydraulic (glycerine), pressure adjustable:  
 Paper: 20 – 2,000 kPa  
 Board: 20 – 10,000 kPa

### INSTALLATION REQUIREMENTS

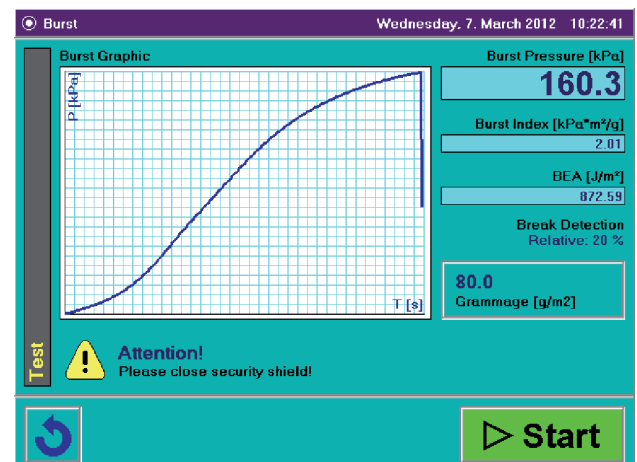
Electrical connection	110 – 230 V, 50 – 60 Hz
Water connection	No
Compressed air	400 – 600 kPa

### APPLICABLE STANDARDS

- ISO 2758 (paper) or 2759 (board)



Measuring area with security protection



User interface with real time curves and values